

**PROFILE OF GRADUATING CLASSES**  
**2006 through 2010**

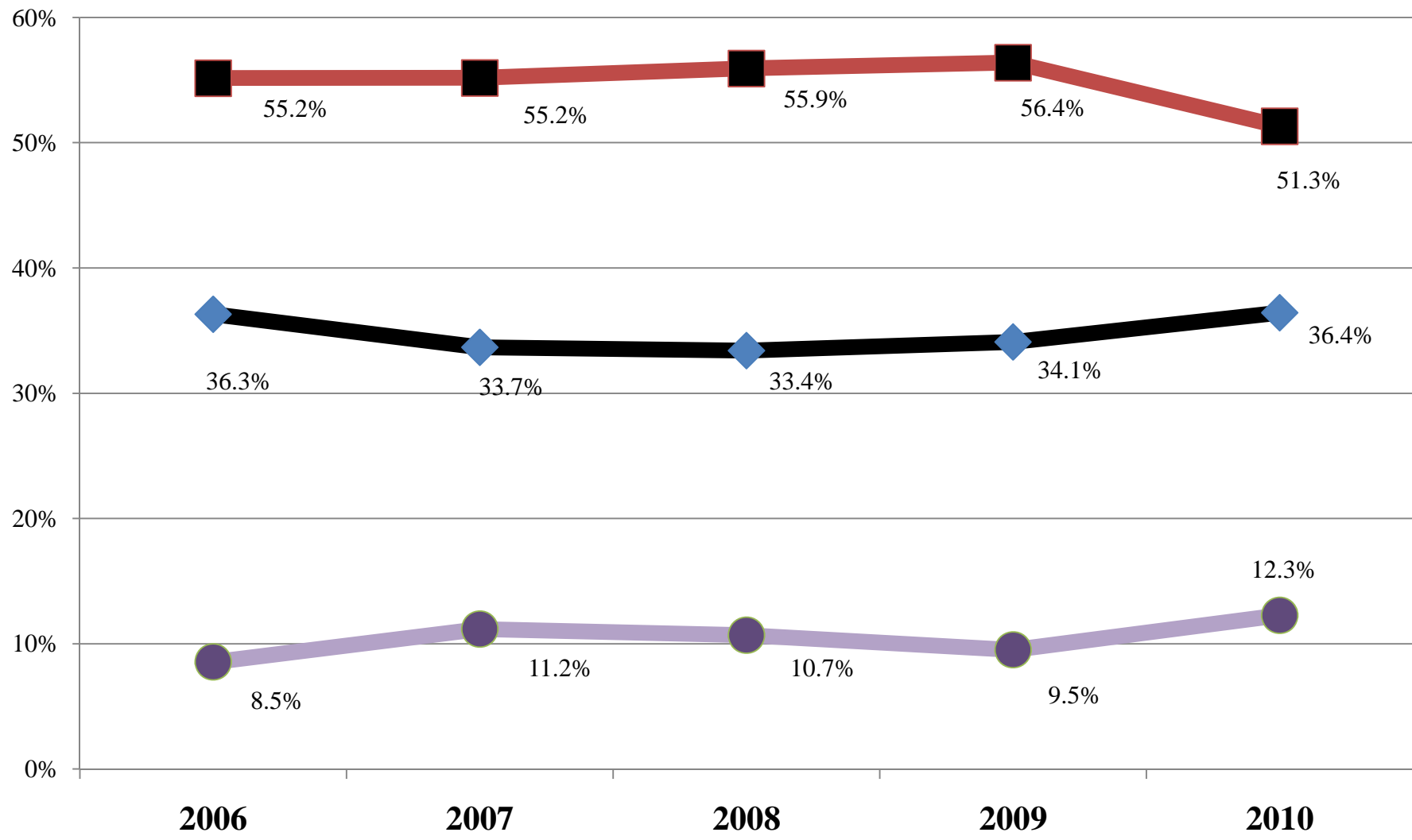
STUDENT CHARACTERISTICS	2006	2007	2008	2009	2010
<b>GENDER:</b>					
Female	61%	59%	56%	56%	58%
Male	39%	41%	44%	44%	42%
<b>Total</b>	<b>100%</b>	<b>100%</b>	<b>100%</b>	<b>100%</b>	<b>100%</b>
<b>ETHNICITY:</b>					
Black	6%	7%	6%	8%	9%
Asian/Pacific Islander	1%	3%	4%	2%	4%
Native American	1%	1%	1%	0%	0%
Hispanic	3%	4%	3%	3%	3%
White (non-Hispanic)	82%	77%	72%	77%	75%
Other / Unknown	8%	9%	14%	9%	9%
<b>Total</b>	<b>100%</b>	<b>100%</b>	<b>100%</b>	<b>100%</b>	<b>100%</b>
<b>DISABLING CONDITIONS:</b>					
<b>Total</b>	<b>7%</b>	<b>5%</b>	<b>4%</b>	<b>3%</b>	<b>4%</b>
<b>AGE DISTRIBUTION:</b>					
21 and under	39%	35%	36%	48%	57%
22-24	17%	19%	25%	16%	13%
25-29	17%	16%	15%	12%	11%
30-34	9%	6%	5%	6%	6%
35-39	3%	5%	7%	7%	4%
40-49	10%	9%	7%	7%	7%
50-64	5%	7%	5%	4%	2%
Over 64	0%	<1%	0%	<1%	<1%
Unknown	<1%	0%	<1%	0%	0%
<b>Total</b>	<b>100%</b>	<b>100%</b>	<b>100%</b>	<b>100%</b>	<b>100%</b>
<b>AVERAGE AGE (YEARS):</b>					
Median Age	23.5	23.9	23.5	22.2	21.2
Mean Age	27.8	28.2	27.3	26.6	25.0
<b>COUNTY OF RESIDENCE:</b>					
Schenectady	55%	55%	58%	56%	57%
Saratoga	15%	13%	15%	16%	14%
Albany	14%	18%	14%	18%	17%
Rensselaer	4%	4%	3%	2%	3%
Schoharie	1%	1%	2%	2%	<1%
Montgomery	4%	5%	3%	4%	4%
Fulton	3%	2%	3%	<1%	1%
Other	4%	2%	3%	2%	4%
<b>Total</b>	<b>100%</b>	<b>100%</b>	<b>100%</b>	<b>100%</b>	<b>100%</b>
<b>Total Graduates</b>	<b>487</b>	<b>477</b>	<b>479</b>	<b>458</b>	<b>545</b>
<b>Total Degrees/Certificates Conferred</b>	<b>504</b>	<b>502</b>	<b>506</b>	<b>484</b>	<b>571</b>

Note: Through May 2010, SCCC has awarded 15,231 degrees and certificates to 14,009 students since its inception in 1969. 1,136 students have earned multiple degrees/certificates from SCCC.

**DEGREES/CERTIFICATES AWARDED BY  
BY PROGRAM OF STUDY: 2006 through 2010**

PROGRAM OF STUDY	2006	2007	2008	2009	2010
<b>TRANSFER PROGRAMS:</b>					
Aviation Science	12	10	2	3	12
Business Administration	21	31	32	40	44
Computer Science	9	5	5	5	9
Human Services	14	13	25	30	30
Humanities and Social Science	54	47	43	37	51
Individual Studies (AA)	1	0	0	0	0
Individual Studies (AS)	2	2	0	0	0
Mathematics and Science	5	3	6	3	5
Performing Arts: Drama	4	5	4	3	3
Performing Arts: Music	16	13	16	12	17
Science	9	12	7	7	7
Teacher Education	36	28	29	25	30
<b>Total Transfer Degrees</b>	<b>183</b>	<b>169</b>	<b>169</b>	<b>165</b>	<b>208</b>
<b>CAREER PROGRAMS:</b>					
Accounting	5	8	6	9	7
Business Administration	36	39	33	36	43
Chemical Dependency Counseling	4	8	7	6	4
Computer Information Systems	9	7	7	11	15
Computer Networking & Systems	4	6	7	10	12
Criminal Justice	42	50	46	52	51
Culinary Arts	60	56	66	61	65
Early Childhood	12	5	14	4	8
Electrical Technology	7	3	3	3	3
Emergency Management	N/A	N/A	5	6	4
Fire Protection Technology	7	13	9	10	6
Hotel and Restaurant Management	29	25	34	29	27
Human Services	5	10	7	6	7
Music / Business	3	1	2	3	4
Nanoscale Materials Technology	N/A	N/A	N/A	1	2
Paralegal	40	31	27	17	25
Tourism and Hospitality Mgmt	15	15	9	9	10
<b>Total Career Degrees*</b>	<b>278</b>	<b>277</b>	<b>283</b>	<b>273</b>	<b>293</b>
<b>CERTIFICATE PROGRAMS:</b>					
Assistant Chef	3	5	1	3	2
Computer Desktop Support Specialist	N/A	N/A	2	1	1
Computer Information Systems	0	2	N/A	N/A	N/A
Computer Repair and Networking	N/A	N/A	N/A	N/A	2
Computer Support Technology	2	3	3	0	2
Criminal Justice	3	3	1	2	5
Early Childhood	1	1	1	0	1
Fire Science	2	2	0	3	1
General Business	2	1	0	2	4
General Studies	1	4	4	3	3
Health Studies	10	11	20	13	24
Music	15	12	12	10	16
Teaching Assistant	3	8	8	9	8
Tourism, Sales, & Convention Mgmt.	1	4	2	0	1
<b>Total Certificates</b>	<b>43</b>	<b>56</b>	<b>54</b>	<b>46</b>	<b>70</b>
<b>Total Degrees &amp; Certificates</b>	<b>504</b>	<b>502</b>	<b>506</b>	<b>484</b>	<b>571</b>
<b>Bachelor Degrees (BBA in Hospitality Management, BBA in Business &amp; Technology Management) from Delhi via Delhi/SCCC joint programs</b>	<b>4</b>	<b>3</b>	<b>13</b>	<b>14</b>	<b>21</b>

### DEGREES AND CERTIFICATES AWARDED BY PROGRAM TYPE



■ Career Degrees      ◆ Transfer Degrees      ● Certificates

**COMPLETION, PERSISTENCE, AND TRANSFER RATES  
FOR FIRST-TIME, FULL-TIME ASSOCIATE LEVEL STUDENTS  
ENTERING CLASSES - Fall 2002 through Fall 2006**

CATEGORY		CLASS ENTERING FALL 2002	CLASS ENTERING FALL 2003	CLASS ENTERING FALL 2004	CLASS ENTERING FALL 2005	CLASS ENTERING FALL 2006
Female		211	223	207	213	192
Male		192	199	202	210	221
<b>Total Class Size</b>	<b>(a)</b>	<b>403</b>	<b>422</b>	<b>409</b>	<b>423</b>	<b>413</b>
Graduates in 1st and 2nd year		40	36	44	44	35
Graduates in 3rd year		41	55	58	39	50
<b>Total Graduates in 1st through 3rd year</b>	<b>(b)</b>	<b>81</b>	<b>91</b>	<b>102</b>	<b>83</b>	<b>85</b>
Transferred to a SUNY School without a degree	(c)	53	58	39	44	60
Transferred to a SUNY School with a degree <sup>(1)</sup>		18	22	35	28	21
Transferred to a non-SUNY School without a degree	(d)	27	30	27	27	36
Transferred to a non-SUNY School with a degree <sup>(1)</sup>		N/A	21	16	11	8
Persists (after 3 years)	(e)	56	41	44	59	41
Received Certificate only	(f)	2	0	0	3	0
<b>Graduation Rate within 3 years <sup>(2)</sup></b>		<b>20.6%</b>	<b>21.6%</b>	<b>24.9%</b>	<b>20.3%</b>	<b>20.6%</b>
Transfer Rate (SUNY) without degree <sup>(3)</sup>		13.2%	13.7%	9.5%	10.4%	14.5%
Transfer Rate (non-SUNY) without degree <sup>(4)</sup>		6.7%	7.1%	6.6%	6.4%	8.7%
Persistence Rate after three years <sup>(5)</sup>		13.9%	9.7%	10.8%	13.9%	9.9%
<b>Total Retention Rate <sup>(6)</sup></b>		<b>54.3%</b>	<b>52.1%</b>	<b>51.8%</b>	<b>51.1%</b>	<b>53.8%</b>

(1) Data are included in row b

(2) Rows [b+f] ÷ a

(3) Row c ÷ a

(4) Row d ÷ a

(5) Row e ÷ a

(6) Rows [b+c+d+e+f] ÷ a

Data source: SUNY's "Graduation, Persistence and Attrition Survey"