

SCCC HEADCOUNT AND F.T.E. HISTORY

1987-1988 through 2011-12

ACADEMIC YEAR	FALL FULL-TIME HEADCOUNT	FALL PART-TIME HEADCOUNT	FALL NON-CREDIT HEADCOUNT	TOTAL FALL HEADCOUNT	TOTAL SPRING HEADCOUNT	TOTAL SUMMER HEADCOUNT	SUM of Fall, Spring & Summer HEADCOUNTS**	ANNUAL CERTIFIED F.T.E.***
87-88	1233	1729	428	3390	3089	1134	7613	1832
88-89	1296	1819	421	3536	3105	1308	7949	1897
89-90	1336	1819	426	3581	3377	1341	8299	1937
90-91	1396	1910	514	3820	3694	1434	8948	2098
91-92	1568	1899	684	4151	3766	1607	9524	2229
92-93	1807	1944	410	4161	3580	1152	8893	2420
93-94	1843	1983	413	4239	3670	1139	9048	2384
94-95	1768	1956	529	4253	3602	1138	8993	2296
95-96	1782	1910	424	4116	3693	1185	8994	2327
96-97	1737	1773	341	3851	3626	1187	8664	2300
97-98	1727	1851	529	4107	3712	1018	8837	2428
98-99	1690	1794	539	4023	3736	1430	9189	2366
99-00	1644	1690	721	4055	3554	1392	9001	2311
00-01	1731	1742	602	4075	3790	1495	9360	2518.8
01-02	1765	1761	531	4057	3849	1462	9368	2590
02-03	1874	1790	484	4148	4029	1368	9545	2660
03-04	2052	2088	457	4597	4495	1368	10460	2901
04-05	2083	2703	486	5272	4273	1454	10999	2894
05-06	2105	2650	455	5210	4430	1462	11102	2949
06-07	2074	2833	345	5252	4227	1393	10872	2887
07-08	2103	2822	256	5181	4202	1307	10690	2902
08-09	2230	2833	336	5399	4438	1496	11333	3114
09-10	2557	2668	361	5586	4986	1788	12360	3459
10-11*	2739	3751	390	6880	5983	1800	14663	3800
11-12*	2876	3939	410	7224	N/A	N/A	N/A	3990

Starting with the 2008 Data Book, only 25 years of data is presented on pages 1-3. Older data is available from the Office of Institutional Research.

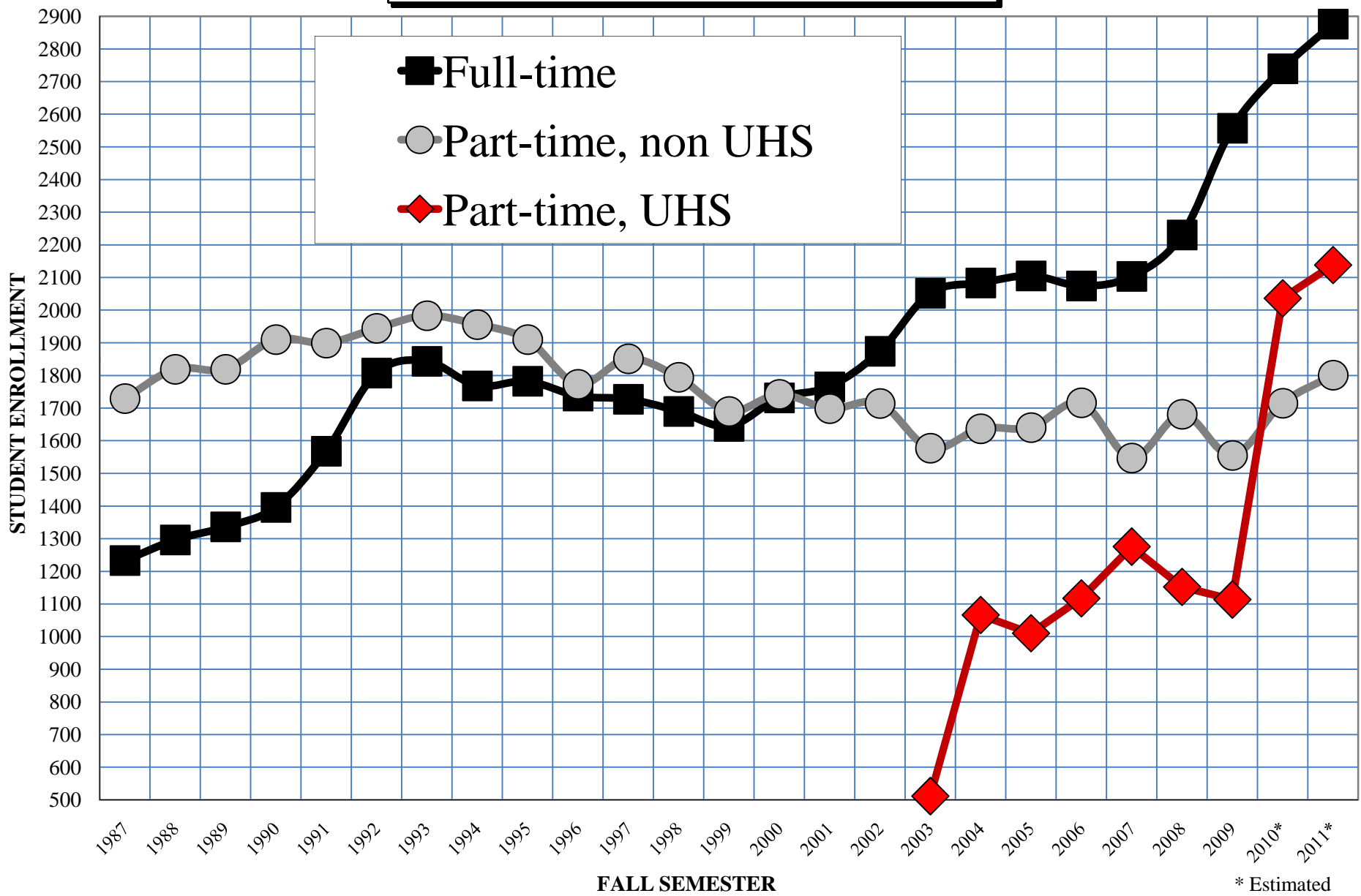
* Estimated

** Not a unique headcount of the students enrolled over the three semesters

*** F.T.E. = Full-time Equivalent

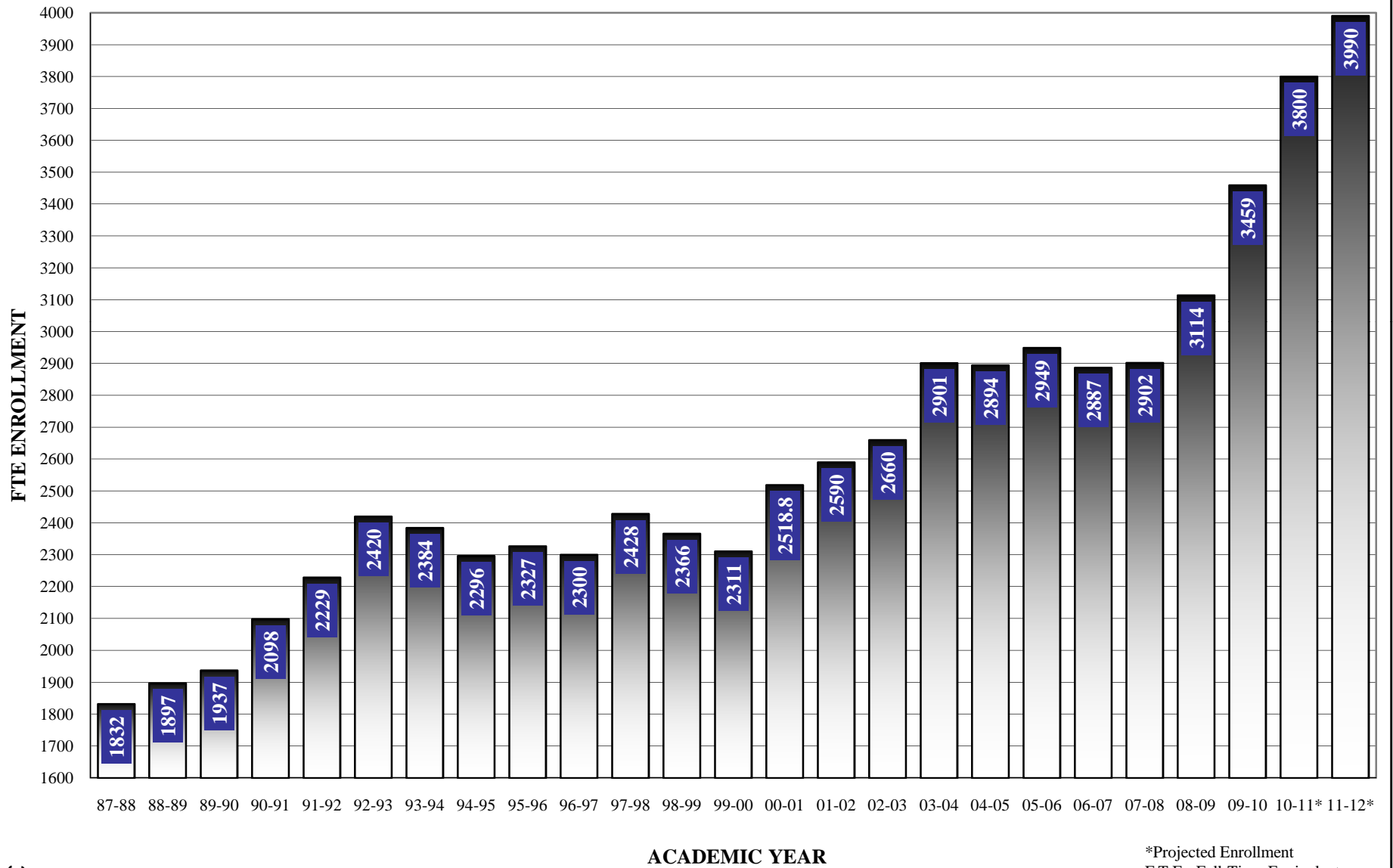
SCCC CREDIT ENROLLMENT HISTORY

Fall 1987 through Fall 2011*



* Estimated

SCCC ANNUAL F.T.E. HISTORY AND PROJECTIONS 1987-1988 through 2011-2012*



*Projected Enrollment
F.T.E.=Full-Time Equivalent

DETAILED STUDENT PROFILE * Fall 2010 (as of 11/12/10)
--

STUDENT CHARACTERISTICS	FULL-TIME		PART-TIME		SUBTOTAL		IN HIGH SCHOOL**		TOTAL	
	Count	Percent	Count	Percent	Count	Percent	Count	Percent	Count	Percent
GENDER:										
Female	1428	52%	1030	60%	2458	55%	1028	50%	3486	54%
Male	1311	48%	685	40%	1996	45%	1008	50%	3004	46%
Total	2739	100%	1715	100%	4454	100%	2036	100%	6490	100%
HISPANIC ORIGIN:***										
Hispanic	123	4%	91	5%	214	5%	82	4%	296	5%
RACE:***										
White	2027	74%	1368	80%	3395	76%	1675	82%	5070	78%
Black or African American	365	13%	177	10%	542	12%	134	7%	676	10%
Asian	61	2%	47	3%	108	2%	98	5%	206	3%
Native Hawaiian or Other Pacific Isl	6	<1%	3	<1%	9	<1%	26	1%	35	<1%
American Indian or Alaska Native	23	<1%	9	<1%	32	<1%	16	<1%	48	<1%
Unknown	221	8%	103	6%	324	7%	43	2%	367	6%
Multi-racial	36	1%	8	<1%	44	<1%	44	2%	88	1%
Total	2739	100%	1715	100%	4454	100%	2036	100%	6490	100%
DISABLING CONDITIONS:										
Total	171	6%	102	6%	273	6%	0	0%	273	4%
MATRICULATION STATUS:										
Matriculated	2647	97%	1107	65%	3754	84%	0	0%	3754	58%
Non-Matriculated	92	3%	608	35%	700	16%	2036	100%	2736	42%
Total	2739	100%	1715	100%	4454	100%	2036	100%	6490	100%

* Non-credit students are excluded from this profile. Only students receiving college level academic credit are included.

** High school students taking 12 or more hours are included in the "In High School" column, not the "Full-Time" column.

*** Starting Fall 2010, SCCC is using the new federal Race/Ethnicity two question format.

Question 1: Are you Hispanic?

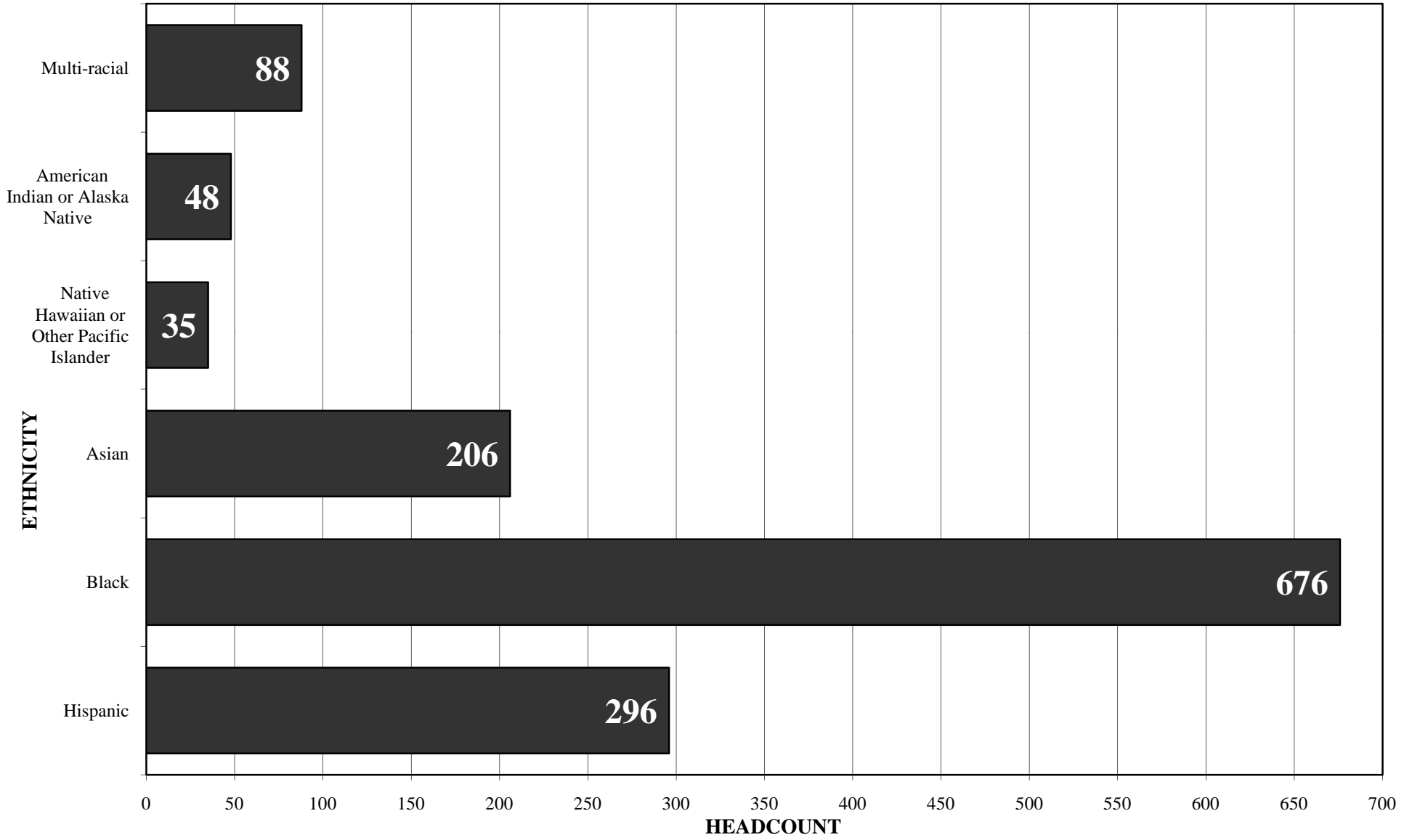
Question 2: What race are you (select one or more)?

DETAILED STUDENT PROFILE *
Fall 2010 (as of 11/12/10)

STUDENT CHARACTERISTICS	FULL-TIME		PART-TIME		SUBTOTAL		IN HIGH SCHOOL		TOTAL	
	Count	Percent	Count	Percent	Count	Percent	Count	Percent	Count	Percent
AGE DISTRIBUTION:										
Under 18	103	4%	42	2%	145	3%	2001	98%	2146	33%
18-21	1588	58%	305	18%	1893	43%	35	2%	1928	30%
22-24	343	13%	318	19%	661	15%	0	0%	661	10%
25-29	319	12%	317	18%	636	14%	0	0%	636	10%
30-34	128	5%	184	11%	312	7%	0	0%	312	5%
35-39	91	3%	136	8%	227	5%	0	0%	227	3%
40-49	112	4%	232	14%	344	8%	0	0%	344	5%
50-64	51	2%	153	9%	204	5%	0	0%	204	3%
Over 64	4	<1%	28	2%	32	<1%	0	0%	32	<1%
Total	2739	100%	1715	100%	4454	100%	2036	100%	6490	100%
AVERAGE AGE (YEARS):										
Median Age	20.7		27.6		22.6		16.8		19.9	
Mean Age	23.8		31.9		26.9		16.7		23.7	
COUNTY OF RESIDENCE:										
Albany	441	16%	280	16%	721	16%	404	20%	1125	17%
Fulton	39	1%	30	2%	69	2%	1	<1%	70	1%
Montgomery	80	3%	52	3%	132	3%	5	<1%	137	2%
Rensselaer	115	4%	58	3%	173	4%	0	0%	173	3%
Saratoga	355	13%	219	13%	574	13%	295	14%	869	13%
Schenectady	1588	58%	1018	59%	2606	59%	1327	65%	3933	61%
Schoharie	27	<1%	23	1%	50	1%	1	<1%	51	<1%
Other	94	3%	35	2%	129	3%	3	<1%	132	2%
Total	2739	100%	1715	100%	4454	100%	2036	100%	6490	100%

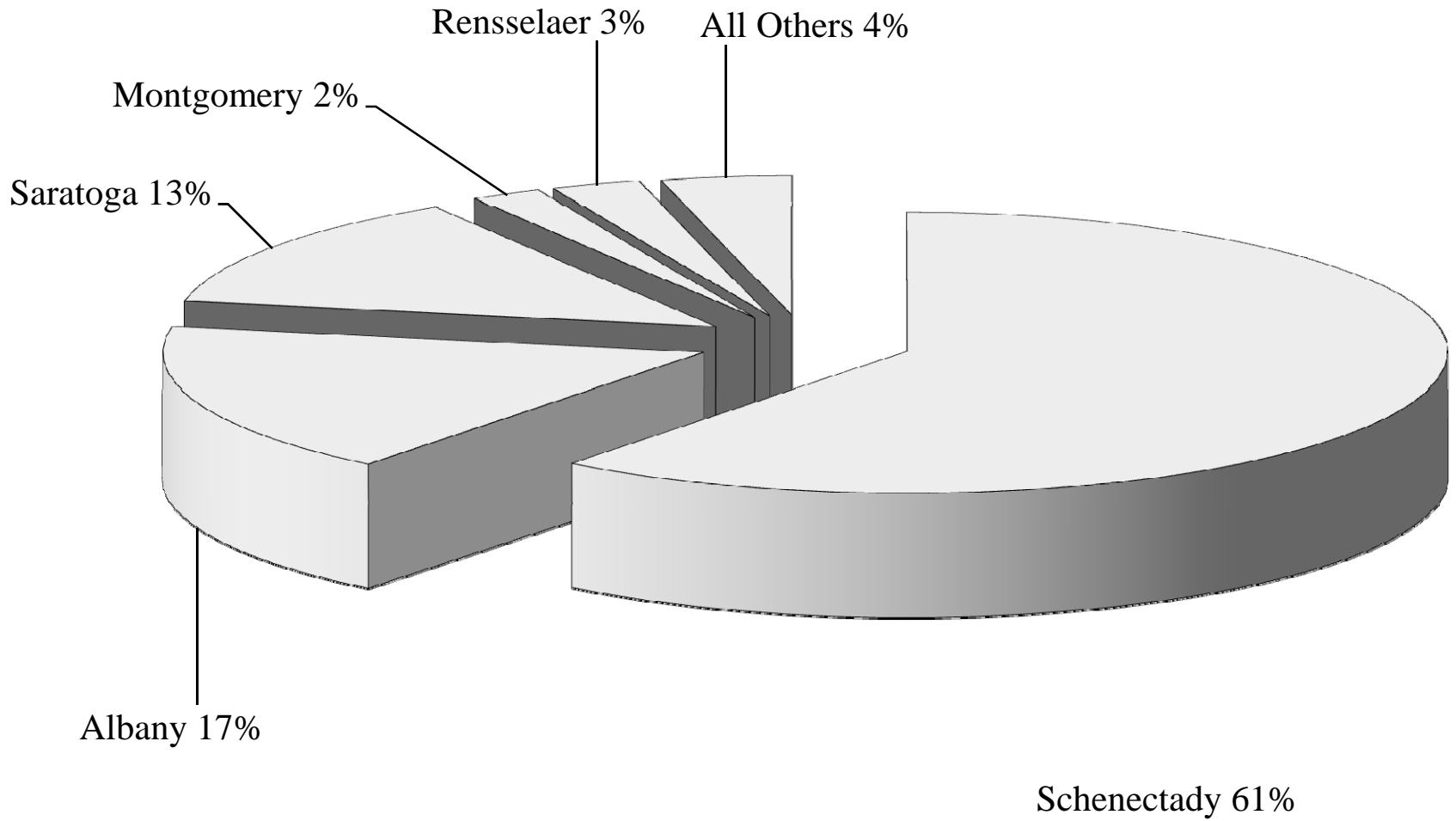
* Non-credit students are excluded from this profile. Only students receiving college level academic credit are included.

ENROLLMENT BY ETHNICITY*
Fall 2010 (as of 11/12/10)



* The caucasian students, who constitute approximately three-quarters of the student body, have been excluded from this bar graph.

ENROLLMENT BY COUNTY OF RESIDENCE
Fall 2010 (as of 11/12/10)



SELECTED STUDENT CHARACTERISTICS *
Fall 2006 through Fall 2010

STUDENT CATEGORY	FALL 2006	FALL 2007	FALL 2008	FALL 2009	FALL 2010
GENDER:					
Female	55.7%	54.4%	54.3%	55.7%	53.7%
Male	44.3%	45.6%	45.7%	44.3%	46.3%
Total	100.0%	100.0%	100.0%	100.0%	100.0%
ETHNICITY:					
White	75.1%	74.2%	75.3%	75.7%	78.1%
All Others (Native American, Asian, Black, Hispanic, & Nonresident Alien)	15.5%	16.5%	17.2%	18.2%	16.2%
Unknown/Not Specified	9.4%	9.3%	7.5%	6.1%	5.7%
Total	100.0%	100.0%	100.0%	100.0%	100.0%
AVERAGE AGE (YEARS):					
Full-time (Median / Mean)	20.1 / 22.5	20.1 / 22.4	20.2 / 22.5	20.4 / 22.9	20.7 / 23.8
Part-time w/o UHS (Median / Mean)	30.0 / 33.7	28.5 / 32.6	29.0 / 32.9	29.0 / 32.7	29.0 / 31.9
Combined w/o UHS(Median / Mean)	24.6 / 27.6	22.4 / 26.7	22.1 / 26.9	22.2 / 26.9	22.6 / 26.9
Part-time w/ UHS(Median / Mean)**	21.6 / 26.9	19.9 / 25.4	19.9 / 26.1	19.9 / 26.0	19.9 / 23.6.0
Combined w/ UHS(Median / Mean)**	20.5 / 25.0	20.1 / 24.1	20.3 / 24.6	20.5 / 24.5	19.9 / 23.7
COUNTY OF RESIDENCE:					
Schenectady	59.2%	56.9%	59.5%	62.0%	60.6%
Albany	18.8%	20.2%	17.7%	15.1%	17.3%
Saratoga	13.0%	13.5%	13.9%	13.8%	13.4%
Fulton, Montgomery, Schoharie, and Rensselaer	6.9%	6.5%	7.0%	7.4%	6.6%
All Others	2.1%	2.9%	1.9%	1.7%	2.0%
Total	100.0%	100.0%	100.0%	100.0%	100.0%
TOTAL	4909	4924	5071	5212	6490

* Non-credit students are not included above. Only students receiving college level academic credit are included.

** Decrease in average age of part time students (and all students combined) is due to increased University in the High School (UHS) enrollments.

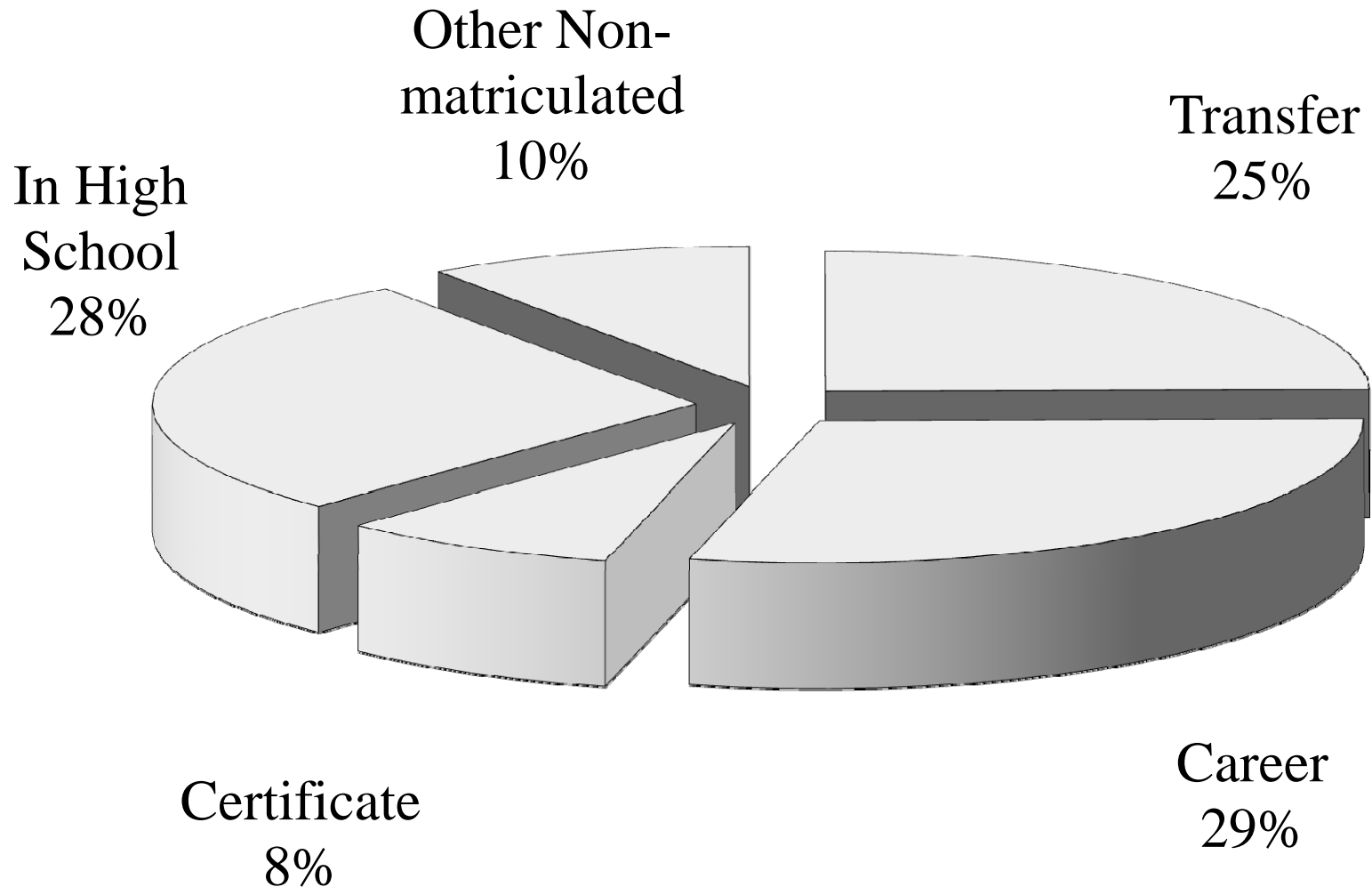
**SCCC ENROLLMENT* BY PROGRAM
OF STUDY AND ENROLLMENT STATUS
Fall 2010 (as of 11/12/10)**

PROGRAM OF STUDY	FIRST PROGRAM		SECOND PROGRAM **		BOTH FIRST & SECOND PROGRAMS		
	FULL-TIME	PART-TIME	FULL-TIME	PART-TIME	FULL-TIME	PART-TIME	TOTAL
TRANSFER PROGRAMS:							
Aviation Science	30	2	3	2	33	4	37
Business Administration	153	100	22	17	175	117	292
Computer Science	33	9	9	1	42	10	52
Criminal Justice	34	5	2	0	36	5	41
Human Services	111	38	2	0	113	38	151
Humanities and Social Sciences	338	87	17	6	355	93	448
Individual Studies (A.A.)	0	0	54	17	54	17	71
Individual Studies (A.S.)	1	0	0	0	1	0	1
Mathematics/Science	40	10	0	0	40	10	50
Nursing - Ellis Hospital	0	47	13	7	13	54	67
Performing Arts: Drama	22	6	0	0	22	6	28
Performing Arts: Music	67	11	7	3	74	14	88
Science	97	60	3	0	100	60	160
Teacher Education	99	28	90	90	189	118	307
Total Transfer Programs	1025	403	222	143	1247	546	1793
CAREER PROGRAMS:							
Accounting	28	26	6	4	34	30	64
Air Traffic Control	1	1	0	0	1	1	2
Alternative Energy Technology	5	3	4	0	9	3	12
Business Administration	138	87	52	7	190	94	284
Chemical Dependency Counseling	43	16	15	7	58	23	81
Computer Information Systems	44	19	16	9	60	28	88
Computer Netw Sys/Cyber Security	40	25	5	3	45	28	73
Criminal Justice	219	48	33	8	252	56	308
Culinary Arts	335	80	24	7	359	87	446
Early Childhood	45	12	9	2	54	14	68
Electrical Technology	1	1	1	0	2	1	3
Emergency Management	19	2	4	2	23	4	27
Fire Protection Technology	40	11	8	5	48	16	64
Hotel and Restaurant Management	85	38	54	11	139	49	188
Human Services	60	27	25	11	85	38	123
Music/Business	17	1	0	2	17	3	20
Nanoscale Materials Technology	43	12	5	1	48	13	61
Paralegal	77	52	5	2	82	54	136
Tourism & Hospitality Management	33	12	5	3	38	15	53
Total Career Programs	1273	473	271	84	1544	557	2101
CERTIFICATE PROGRAMS:							
Assistant Chef	11	9	1	0	12	9	21
Computer Desktop Support Specialist	4	2	3	1	7	3	10
Computer Repair and Networking	8	4	3	0	11	4	15
Criminal Justice	14	6	0	1	14	7	21
Early Childhood	6	5	0	0	6	5	11
Fire Science	8	5	0	1	8	6	14
General Business	21	5	2	0	23	5	28
Health Studies	189	167	3	0	192	167	359
Music	68	14	6	2	74	16	90
Storage Battery Technology	8	1	0	0	8	1	9
Teaching Assistant	10	10	0	0	10	10	20
Tourism, Sales, and Conv. Mgmt.	2	3	0	0	2	3	5
Total Certificate Programs	349	231	18	5	367	236	603
Total Matriculated	2647	1107	511	232	3158	1339	4497
Non-Matriculated	92	2644			92	2644	2736
TOTAL (ALL PROGRAMS)	2739	3751	511	232	3250	3983	7233

* Non-credit students are not included above. Only students receiving college level academic credit are included.

** Second Program refers to students who have "dual majors". Prior to 2006, only the first program of study was reported in this table, so the total would equal the number of students enrolled in the College. In 2006 and beyond, both the first and second program of study are reported. This change accurately reports enrollment by program, but overreports College-wide enrollment.

SCCC ENROLLMENT BY PROGRAM TYPE
Fall 2010 (as of 11/12/10)



SCCC ADMISSIONS REPORT - FULL-TIME STUDENTS *
Fall 2006 through Fall 2010

PROGRAM OF STUDY	FALL 2006			FALL 2007			FALL 2008			FALL 2009			FALL 2010			Program Yield
	Applied**	Accepted	Registered	Applied**	Accepted	Registered	Applied**	Accepted	Registered	Applied**	Accepted	Registered	Applied**	Accepted	Registered	
TRANSFER PROGRAMS:																
Aviation Science	36	35	12	28	28	14	30	30	11	42	36	10	64	59	17	29%
Business Administration	101	100	60	94	94	56	129	129	71	122	111	65	118	107	56	52%
Computer Science	28	28	17	26	25	12	37	36	21	37	33	15	36	33	13	39%
Criminal Justice	N/A	N/A	N/A	N/A	N/A	N/A	N/A	N/A	N/A	N/A	N/A	N/A	33	28	20	71%
Human Services	41	40	32	36	34	24	36	33	18	44	37	22	58	49	31	63%
Humanities and Social Science	124	124	69	160	154	90	190	190	103	410	326	176	414	278	153	55%
Individual Studies (A.A.)	0	0	0	0	0	0	0	0	0	0	0	0	0	0	0	N/A
Individual Studies (A.S.)	0	0	0	0	0	0	0	0	0	0	0	0	0	0	0	N/A
Mathematics and Science	33	33	23	30	29	19	30	30	12	53	51	29	55	48	25	52%
Performing Arts: Drama	24	21	12	24	23	11	34	34	20	33	26	6	27	24	9	38%
Performing Arts: Music	21	20	19	22	21	18	27	24	17	19	19	12	26	26	19	73%
Science	52	51	23	45	43	28	43	42	24	60	54	31	93	86	54	63%
Teacher Education	93	90	56	99	98	71	95	93	58	91	84	57	85	83	39	47%
Total Transfer Degrees	555	544	323	564	549	343	651	641	355	911	777	423	1009	821	436	53%
CAREER PROGRAMS:																
Accounting	33	31	8	38	33	12	27	24	9	36	30	14	31	29	11	38%
Air Traffic Control	N/A	N/A	N/A	N/A	N/A	N/A	N/A	N/A	N/A	N/A	N/A	N/A	2	2	1	50%
Alternative Energy Technology	N/A	N/A	N/A	N/A	N/A	N/A	N/A	N/A	N/A	N/A	N/A	N/A	5	4	3	75%
Business Administration	94	91	45	110	106	58	90	76	37	102	83	35	109	97	43	44%
Chemical Dependency Counseling	23	23	9	12	12	5	21	17	8	24	21	6	34	30	14	47%
Computer Information Systems	26	23	10	30	30	16	29	25	14	23	19	12	28	20	14	70%
Computer Networking/Cyber Security	26	25	17	22	22	14	38	36	14	45	39	18	33	30	11	37%
Criminal Justice	154	149	77	152	143	68	154	148	71	220	191	101	191	169	81	48%
Culinary Arts	170	166	85	214	207	95	264	257	134	360	327	155	385	339	154	45%
Early Childhood	46	45	16	57	53	18	57	57	17	73	65	21	85	72	21	29%
Electrical Technology	10	10	3	8	8	3	8	7	4	11	9	0	0	0	0	N/A
Emergency Management	N/A	N/A	N/A	2	2	1	11	11	7	10	8	4	18	13	5	38%
Fire Protection Technology	19	18	13	20	17	10	28	28	17	30	30	16	29	29	15	52%
Hotel and Restaurant Management	64	64	27	64	60	30	59	59	34	57	50	26	55	50	27	54%
Human Services	38	38	14	39	38	21	43	38	17	48	39	18	64	49	25	51%
Music/Business	2	2	2	2	2	2	3	3	3	4	3	3	4	4	4	100%
Nanoscale Materials	N/A	N/A	N/A	2	2	2	7	7	6	20	19	14	28	25	15	60%
Paralegal	35	35	19	27	24	7	39	37	23	41	36	15	62	53	25	47%
Tourism & Hospitality Management	27	23	13	21	19	8	32	29	12	23	21	12	34	29	14	48%
Total Career Degrees	767	743	358	820	778	370	910	859	427	1127	990	470	1197	1044	483	46%

* Includes both First-time and Transfer Students

**Applied refers to completed applications

SCCC ADMISSIONS REPORT - FULL-TIME STUDENTS *

Fall 2006 through Fall 2010

(continued)

PROGRAM OF STUDY	FALL 2006			FALL 2007			FALL 2008			FALL 2009			FALL 2010			Program Yield
	Applied**	Accepted	Registered	Applied**	Accepted	Registered	Applied**	Accepted	Registered	Applied**	Accepted	Registered	Applied**	Accepted	Registered	
CERTIFICATE PROGRAMS:																
Assistant Chef	16	16	8	19	10	1	14	14	4	12	10	2	17	15	5	33%
Computer Desktop Support	N/A	N/A	N/A	1	1	1	1	1	0	2	2	2	2	2	1	50%
Computer Information Systems	5	4	0	1	1	0	0	0	0	0	0	0	N/A	N/A	N/A	N/A
Computer Repair and Networking	N/A	N/A	N/A	N/A	N/A	N/A	N/A	N/A	N/A	13	13	6	26	15	5	33%
Computer Support Technology	6	6	1	5	5	0	10	10	5	2	2	0	N/A	N/A	N/A	N/A
Criminal Justice	9	8	4	13	13	5	13	13	7	23	16	5	16	15	9	60%
Early Childhood	9	9	4	6	6	0	5	4	0	11	6	2	26	22	4	18%
Fire Science	15	15	5	13	13	4	12	12	5	12	12	5	15	13	5	38%
General Business	10	10	3	10	8	3	14	14	3	28	23	9	23	17	5	29%
General Studies	196	165	82	160	152	76	165	133	73	21	17	0	N/A	N/A	N/A	N/A
Health Studies	147	145	62	132	132	68	151	151	78	230	190	77	288	251	114	45%
Music	129	125	50	90	88	38	113	113	51	154	131	54	162	148	62	42%
Storage Battery Technology	N/A	N/A	N/A	N/A	N/A	N/A	N/A	N/A	N/A	N/A	N/A	N/A	8	8	5	63%
Teaching Assistant	7	7	2	6	6	2	9	9	5	10	8	3	9	9	2	22%
Tourism, Sales, & Convention Mgmt	7	7	4	1	0	0	1	1	1	3	3	2	2	1	0	0%
Total Certificates	556	517	225	457	435	198	508	475	232	521	433	167	594	516	217	42%
NON-MATRICULATED	0	0	0	0	1	1	0	0	0	1	0	0	3	1	0	
TOTAL	1940	1844	938	2018	1936	981	2069	1975	1014	2560	2200	1060	2803	2382	1136	
Acceptance Rate (Accepted/Applied)		93.0%			95.4%			95.5%			85.9%			85.0%		
Yield Rate (Registered/Accepted)		43.5%			45.6%			51.3%			48.2%			47.7%		

* Includes both First-time and Transfer Students

**Applied refers to completed applications

SCCC ADMISSIONS REPORT - PART-TIME STUDENTS *
Fall 2006 through Fall 2010

PROGRAM OF STUDY	FALL 2006			FALL 2007			FALL 2008			FALL 2009			FALL 2010			
	Applied**	Accepted	Registered	Applied**	Accepted	Registered	Applied**	Accepted	Registered	Applied**	Accepted	Registered	Applied**	Accepted	Registered	Program Yield
TRANSFER PROGRAMS:																
Aviation Science	2	2	0	5	4	1	5	4	1	3	2	1	3	2	0	0%
Business Administration	18	17	13	22	18	9	21	17	9	18	15	8	17	15	6	40%
Computer Science	3	3	2	4	3	2	4	1	1	10	6	2	5	3	2	67%
Criminal Justice	N/A	N/A	N/A	N/A	N/A	N/A	N/A	N/A	N/A	N/A	N/A	N/A	7	6	4	67%
Human Services	9	7	3	9	9	5	9	9	4	18	14	4	19	18	8	44%
Humanities and Social Science	20	17	12	14	14	10	25	22	11	75	36	17	102	46	26	57%
Individual Studies (A.A.)	0	0	0	0	0	0	0	0	0	0	0	0	0	0	0	N/A
Individual Studies (A.S.)	0	0	0	0	0	0	0	0	0	0	0	0	0	0	0	N/A
Mathematics and Science	8	8	5	2	2	0	6	6	6	9	8	4	8	5	5	100%
Performing Arts: Drama	4	3	1	3	3	1	2	0	0	2	2	1	3	2	1	50%
Performing Arts: Music	2	2	1	1	1	1	0	0	0	0	0	0	1	1	1	100%
Science	7	6	5	10	9	6	8	7	3	4	4	2	13	11	7	64%
Teacher Education	11	10	7	10	8	6	13	11	4	8	6	3	10	10	5	50%
Total Transfer Degrees	85	76	49	80	71	41	93	77	39	147	93	42	188	119	65	55%
CAREER PROGRAMS:																
Accounting	12	11	10	10	10	5	15	11	5	19	15	4	12	9	6	67%
Air Traffic Control	N/A	N/A	N/A	N/A	N/A	N/A	N/A	N/A	N/A	N/A	N/A	N/A	0	0	0	N/A
Alternative Energy Technology	N/A	N/A	N/A	N/A	N/A	N/A	N/A	N/A	N/A	N/A	N/A	N/A	1	1	1	100%
Business Administration	30	29	16	26	24	9	26	26	13	32	25	11	37	25	13	52%
Chemical Dependency Counseling	2	2	0	6	6	3	5	5	2	7	4	0	6	5	4	80%
Computer Information Systems	7	6	5	6	6	4	5	5	4	6	4	1	7	7	6	86%
Computer Networking/Cyber Security	10	9	5	10	10	5	8	8	3	9	7	2	13	12	8	67%
Criminal Justice	23	20	9	15	15	9	19	19	9	39	31	9	27	22	10	45%
Culinary Arts	36	36	16	41	41	21	36	36	16	60	53	24	60	51	19	37%
Early Childhood	7	6	2	13	9	3	18	13	6	20	17	4	11	6	4	67%
Electrical Technology	9	9	5	2	2	1	0	0	0	1	1	0	0	0	0	N/A
Emergency Management	N/A	N/A	N/A	0	0	0	3	2	1	8	4	2	5	3	1	33%
Fire Protection Technology	1	1	0	4	4	3	7	6	1	5	5	4	2	2	2	100%
Hotel and Restaurant Management	12	7	2	6	6	4	9	5	1	10	9	5	15	12	6	50%
Human Services	9	8	4	14	12	8	22	22	10	15	11	5	14	10	5	50%
Music/Business	0	0	0	0	0	0	0	0	0	0	0	0	0	0	0	N/A
Nanoscale Materials	N/A	N/A	N/A	0	0	0	1	0	1	7	6	4	8	8	4	50%
Paralegal	13	11	7	14	14	5	8	6	2	14	11	6	16	15	9	60%
Tourism & Hospitality Management	4	4	1	3	3	3	5	4	0	3	2	2	9	8	3	38%
Total Career Degrees	185	170	85	175	159	82	187	168	74	255	205	83	243	196	101	52%

* Includes both First-time and Transfer Students

**Applied refers to completed applications

SCCC ADMISSIONS REPORT - PART-TIME STUDENTS *

Fall 2006 through Fall 2010

(continued)

PROGRAM OF STUDY	FALL 2006			FALL 2007			FALL 2008			FALL 2009			FALL 2010			Program Yield
	Applied**	Accepted	Registered	Applied**	Accepted	Registered	Applied**	Accepted	Registered	Applied**	Accepted	Registered	Applied**	Accepted	Registered	
CERTIFICATE PROGRAMS:																
Assistant Chef	2	1	0	6	6	2	3	3	2	2	2	2	7	6	3	50%
Computer Desktop Support	N/A	N/A	N/A	1	1	1	1	1	0	1	1	0	5	2	2	100%
Computer Information Systems	1	1	0	3	3	2	0	0	0	0	0	0	N/A	N/A	N/A	N/A
Computer Repair and Networking	N/A	N/A	N/A	N/A	N/A	N/A	N/A	N/A	N/A	5	5	3	9	7	1	14%
Computer Support Technology	5	4	0	1	1	0	2	2	1	1	1	1	N/A	N/A	N/A	N/A
Criminal Justice	4	4	1	4	3	2	1	1	1	7	5	1	7	4	0	0%
Early Childhood	1	1	0	2	2	0	5	5	1	4	3	1	8	6	2	33%
Fire Science	3	2	1	3	1	0	0	0	0	1	1	1	5	4	0	N/A
General Business	5	5	2	6	6	2	3	3	1	10	7	5	17	14	5	36%
General Studies	63	52	23	52	43	18	47	34	16	4	1	0	N/A	N/A	N/A	N/A
Health Studies	52	43	28	42	34	18	60	46	28	66	51	28	96	78	35	45%
Music	18	17	10	7	6	3	9	9	5	17	13	4	9	6	5	83%
Storage Battery Technology	N/A	N/A	N/A	N/A	N/A	N/A	N/A	N/A	N/A	N/A	N/A	N/A	3	2	1	50%
Teaching Assistant	7	7	2	4	4	1	3	2	0	6	3	1	4	4	2	50%
Tourism, Sales, & Convention Mgmt	1	0	0	1	1	1	0	0	0	0	0	0	0	0	0	N/A
Total Certificates	162	137	67	131	110	49	133	105	55	124	93	47	170	133	56	42%
TOTAL	422	372	198	381	343	173	413	350	168	199	152	80	601	448	222	50%

DEMOGRAPHIC PROFILE OF FIRST-TIME STUDENTS*
Fall 2010 (as of 11/12/10)

STUDENT CHARACTERISTICS	FULL-TIME		PART-TIME		TOTAL	
	Count	Percent	Count	Percent	Count	Percent
GENDER:						
Female	420	50%	219	60%	639	53%
Male	426	50%	147	40%	573	47%
Total	846	100%	366	100%	1212	100%
HISPANIC ORIGIN:**						
Hispanic	43	5%	23	6%	66	5%
RACE:**						
White	596	70%	294	80%	890	73%
Black or African American	117	14%	39	11%	156	13%
Asian	21	2%	10	3%	31	3%
Native Hawaiian or Other Pacific Islander	0	0%	1	<1%	1	<1%
American Indian or Alaska Native	7	<1%	0	0%	7	<1%
Unknown***	89	11%	18	5%	107	9%
Multi-racial	16	2%	4	1%	20	2%
Total	846	100%	366	100%	1212	100%
DISABLING CONDITIONS:						
Total	63	7%	11	3%	74	6%
MATRICULATION STATUS:						
Matriculated	830	98%	148	40%	978	81%
Non-Matriculated	16	2%	218	60%	234	19%
Total	846	100%	366	100%	1212	100%

* University in the High School students and students taking only non-credit courses are not considered first-time students so they are not included in this table.

** Starting Fall 2010, SCCC is using the new federal Race/Ethnicity two question format.

Question 1: Are you Hispanic?

Question 2: What race are you (select one or more)?

*** Unknown includes those students who chose not to specify their ethnicity.

DEMOGRAPHIC PROFILE OF FIRST-TIME STUDENTS Fall 2010 (as of 11/12/10)
--

STUDENT CHARACTERISTICS	FULL-TIME		PART-TIME		TOTAL	
	Count	Percent	Count	Percent	Count	Percent
AGE DISTRIBUTION:						
Under 18	92	11%	32	9%	124	10%
18-21	559	66%	82	22%	641	53%
22-24	58	7%	55	15%	113	9%
25-29	57	7%	56	15%	113	9%
30-34	28	3%	39	11%	67	6%
35-39	19	2%	24	7%	43	4%
40-49	25	3%	38	10%	63	5%
50-64	8	<1%	34	9%	42	3%
Over 64	0	0%	6	2%	6	<1%
Total	846	100%	366	100%	1212	100%
AVERAGE AGE (YEARS):						
Median Age	18.8		26.2		19.6	
Mean Age	21.6		30.4		24.3	
COUNTY OF RESIDENCE:						
Albany	122	14%	66	18%	188	16%
Fulton	8	<1%	12	3%	20	2%
Montgomery	21	2%	13	4%	34	3%
Rensselaer	35	4%	11	3%	46	4%
Saratoga	95	11%	49	13%	144	12%
Schenectady	510	60%	182	50%	692	57%
Schoharie	12	1%	10	3%	22	2%
Other	43	5%	23	6%	66	5%
Total	846	100%	366	100%	1212	100%

Note: University in the High School students and students taking only non-credit courses are not considered first-time students so they are not included in this table.

**FIRST-TIME ENROLLMENT BY PROGRAM
OF STUDY AND ENROLLMENT STATUS ***
Fall 2010 (as of 11/12/10)

PROGRAM OF STUDY	FIRST PROGRAM		SECOND PROGRAM**		BOTH FIRST & SECOND PROGRAMS		
	FULL-TIME	PART-TIME	FULL-TIME	PART-TIME	FULL-TIME	PART-TIME	TOTAL
TRANSFER PROGRAMS:							
Aviation Science	11	1	1	0	12	1	13
Business Administration	34	6	5	2	39	8	47
Computer Science	7	1	2	0	9	1	10
Criminal Justice	10	2	1	0	11	2	13
Human Services	24	3	4	0	28	3	31
Humanities and Social Sciences	111	15	6	0	117	15	132
Individual Studies (A.A.)	0	0	0	0	0	0	0
Individual Studies (A.S.)	0	0	0	0	0	0	0
Mathematics/Science	18	1	3	0	21	1	22
Nursing - Ellis Hospital	0	15	0	0	0	15	15
Performing Arts: Drama	8	0	3	1	11	1	12
Performing Arts: Music	14	0	1	0	15	0	15
Science	32	5	10	1	42	6	48
Teacher Education	25	4	1	1	26	5	31
Total Transfer Programs	294	53	37	5	331	58	389
CAREER PROGRAMS:							
Accounting	7	5	2	2	9	7	16
Air Traffic Control	1	0	0	0	1	0	1
Alternative Energy Technology	2	0	1	0	3	0	3
Business Administration	28	10	13	1	41	11	52
Chemical Dependency Counseling	10	2	2	1	12	3	15
Computer Information Systems	11	2	1	0	12	2	14
Computer Netw Sys/Cyber Security	13	5	1	0	14	5	19
Criminal Justice	79	4	8	1	87	5	92
Culinary Arts	127	12	13	0	140	12	152
Early Childhood	16	2	2	0	18	2	20
Electrical Technology	0	0	0	0	0	0	0
Emergency Management	6	0	1	0	7	0	7
Fire Protection Technology	7	2	1	0	8	2	10
Hotel and Restaurant Management	24	2	11	2			
Human Services	19	8	5	1			
Music/Business	3	0	0	0	3	0	3
Nanoscale Materials Technology	12	3	0	0	12	3	15
Paralegal	10	1	0	0	10	1	11
Tourism & Hospitality Management	9	1	0	0	9	1	10
Total Career Programs	384	59	61	8	386	54	512
CERTIFICATE PROGRAMS:							
Assistant Chef	6	1	0	0	6	1	7
Computer Desktop Support Specialist	0	0	0	0	0	0	0
Computer Repair and Networking	3	2	0	0	3	2	5
Criminal Justice	7	0	0	0	7	0	7
Early Childhood	3	1	0	0	3	1	4
Fire Science	4	0	0	0	4	0	4
General Business	7	0	21	1	28	1	29
Health Studies	76	23	61	1	137	24	161
Music	45	5	92	3	137	8	145
Storage Battery Technology	0	1	0	0	0	1	1
Teaching Assistant	1	3	0	0	1	3	4
Tourism, Sales, and Conv. Mgmt.	0	0	0	0	0	0	0
Total Certificate Programs	152	36	174	5	326	41	367
Total Matriculated	830	148	272	18	1043	153	1268
Non Matriculated	16	218			16	218	234
TOTAL (ALL PROGRAMS)	846	366	272	18	1059	371	1502

* Non-credit students are not included above. Only students receiving college level academic credit are included.

** Second Program refers to students who have "dual majors". Prior to 2006, only the first program of study was reported in this table, so the total would equal the number of students enrolled in the College. In 2006 and beyond, both the first and second program of study are reported. This change accurately reports enrollment by program, but overreports College-wide enrollment.

DEMOGRAPHIC PROFILE OF TRANSFER STUDENTS*
Fall 2010 (as of 11/12/10)

STUDENT CHARACTERISTICS	FULL-TIME		PART-TIME		TOTAL	
	Count	Percent	Count	Percent	Count	Percent
GENDER:						
Female	152	53%	76	66%	228	57%
Male	134	47%	39	34%	173	43%
Total	286	100%	115	100%	401	100%
HISPANIC ORIGIN:**						
Hispanic	11	4%	9	8%	20	5%
RACE:**						
White	206	72%	81	70%	287	72%
Black or African American	39	14%	14	12%	53	13%
Asian	6	2%	6	5%	12	3%
Native Hawaiian or Other Pacific Islander	0	0%	0	0%	0	0%
American Indian or Alaska Native	2	<1%	1	<1%	3	<1%
Unknown***	25	9%	12	10%	37	9%
Multi-racial	8	3%	1	<1%	9	2%
Total	286	100%	115	100%	401	100%
DISABLING CONDITIONS:						
Total	5	2%	2	2%	7	2%
MATRICULATION STATUS:						
Matriculated	285	100%	96	83%	381	95%
Non-Matriculated	1	<1%	19	17%	20	5%
Total	286	100%	115	100%	401	100%

* Transfer students are enrolled in credit-bearing courses and in their first semester at SCCC.

** Starting Fall 2010, SCCC is using the new federal Race/Ethnicity two question format.

Question 1: Are you Hispanic?

Question 2: What race are you (select one or more)?

*** Unknown includes those students who chose not to specify their ethnicity.

DEMOGRAPHIC PROFILE OF TRANSFER STUDENTS
Fall 2010 (as of 11/12/10)

STUDENT CHARACTERISTICS	FULL-TIME		PART-TIME		SUBTOTAL	
	Count	Percent	Count	Percent	Count	Percent
AGE DISTRIBUTION:						
Under 18	3	1%	0	0%	3	<1%
18-21	160	56%	16	14%	176	44%
22-24	33	12%	15	13%	48	12%
25-29	33	12%	24	21%	57	14%
30-34	15	5%	26	23%	41	10%
35-39	10	3%	12	10%	22	5%
40-49	23	8%	15	13%	38	9%
50-64	9	3%	6	5%	15	4%
Over 64	0	0%	1	<1%	1	<1%
Total	286	100%	115	100%	401	100%
AVERAGE AGE (YEARS):						
Median Age	21.1		30.4		23.4	
Mean Age	25.4		32.1		27.3	
COUNTY OF RESIDENCE:						
Albany	65	23%	28	24%	93	23%
Fulton	10	3%	3	3%	13	3%
Montgomery	8	3%	7	6%	15	4%
Rensselaer	19	7%	9	8%	28	7%
Saratoga	51	18%	16	14%	67	17%
Schenectady	114	40%	52	45%	166	41%
Schoharie	3	1%	0	0%	3	<1%
Other	16	6%	0	0%	16	4%
Total	286	100%	115	100%	401	100%

**TRANSFER ENROLLMENT BY PROGRAM
OF STUDY AND ENROLLMENT STATUS *
Fall 2010 (as of 11/12/10)**

PROGRAM OF STUDY	FIRST PROGRAM		SECOND PROGRAM**		BOTH FIRST & SECOND PROGRAMS		
	FULL-TIME	PART-TIME	FULL-TIME	PART-TIME	FULL-TIME	PART-TIME	TOTAL
TRANSFER PROGRAMS:							
Aviation Science	4	0	1	0	5	0	5
Business Administration	16	4	0	0	16	4	20
Computer Science	5	1	1	0	6	1	7
Criminal Justice	10	1	2	0	12	1	13
Human Services	10	3	3	0	13	3	16
Humanities and Social Sciences	37	7	0	0	37	7	44
Individual Studies (A.A.)	0	0	0	0	0	0	0
Individual Studies (A.S.)	0	0	2	2	2	2	4
Mathematics/Science	3	1	0	0	3	1	4
Nursing - Ellis Hospital	0	1	0	0	0	1	1
Performing Arts: Drama	0	1	0	0	0	1	1
Performing Arts: Music	3	1	5	3	8	4	12
Science	14	4	1	1	15	5	20
Teacher Education	11	2	0	0	11	2	13
Total Transfer Programs	113	26	15	6	128	32	160
CAREER PROGRAMS:							
Accounting	3	2	0	0	3	2	5
Air Traffic Control	0	0	1	0	1	0	1
Alternative Energy Technology	1	1	3	1	4	2	6
Business Administration	10	6	0	0	10	6	16
Chemical Dependency Counseling	8	2	1	0	9	2	11
Computer Information Systems	6	2	1	0	7	2	9
Computer Netw Sys/Cyber Security	5	4	3	1	8	5	13
Criminal Justice	10	1	0	0	10	1	11
Culinary Arts	35	5	2	1	37	6	43
Early Childhood	3	1	0	0	3	1	4
Electrical Technology	0	0	0	0	0	0	0
Emergency Management	1	0	1	0	2	0	2
Fire Protection Technology	6	1	3	0	9	1	10
Hotel and Restaurant Management	9	3	4	0			
Human Services	6	2	0	0			
Music/Business	1	0	1	0	2	0	2
Nanoscale Materials Technology	7	1	0	0	7	1	8
Paralegal	12	10	0	1	12	11	23
Tourism & Hospitality Management	6	2	0	0	6	2	8
Total Career Programs	129	43	20	4	130	42	196
CERTIFICATE PROGRAMS:							
Assistant Chef	0	1	0	0	0	1	1
Computer Desktop Support Specialist	1	0	0	0	1	0	1
Computer Repair and Networking	1	0	0	0	1	0	1
Criminal Justice	1	1	0	0	1	1	2
Early Childhood	0	0	0	0	0	0	0
Fire Science	1	0	0	0	1	0	1
General Business	1	1	0	0	1	1	2
Health Studies	20	24	0	0	20	24	44
Music	11	0	0	0	11	0	11
Storage Battery Technology	5	0	0	0	5	0	5
Teaching Assistant	2	0	0	0	2	0	2
Tourism, Sales, and Conv. Mgmt.	0	0	0	0	0	0	0
Total Certificate Programs	43	27	0	0	43	27	70
Total Matriculated	285	96	35	10	301	101	426
Non Matriculated	1	19			1	19	20
TOTAL (ALL PROGRAMS)	286	115	35	10	302	120	446

* Non-credit students are not included above. Only students receiving college level academic credit are included.

** Second Program refers to students who have "dual majors". Prior to 2006, only the first program of study was reported in this table, so the total would equal the number of students enrolled in the College. In 2006 and beyond, both the first and second program of study are reported. This change accurately reports enrollment by program, but overreports College-wide enrollment.

CONTINUING EDUCATION

	Non-Credit State Aid Summary	Non-Credit Remedial Programs			
		GED		ESL	
Year	FTE*	Students	FTE	Students	FTE
2001-02	201	81	25		
2002-03	166	125	28		
2003-04	168	136	32	73	8
2004-05	77	214	60	82	11
2005-06	88	206	77	86	11
2006-07	73	175	48	99	15
2007-08	70**	249	61	77	11
2008-09	105	303	84	121	20
2009-10	156	457	114	91	14

General Non-Credit Courses			
Year	Courses	Students	Average Class Size
2001-02	82	540	7
2002-03	89	779	9
2003-04	81	531	7
2004-05	153	1356	9
2005-06	172	1335	8
2006-07	155	1372	9
2007-08	130	1165	9
2008-09	144	1331	9
2009-10	147	1453	10

* FTE match official enrollment data

** In 2007-08, 4 FTE were not included in the official data.

University in the High School					
Year	Sites	Courses	Average Course Size	Credits	FTE
2003 - 04	16	89	14.9	4177	139
2004 - 05	19	120	14.8	5780	193
2005 - 06	18	121	13.7	5544	185
2006 - 07	17	116	14.0	5349	178
2007 - 08	19	123	15.2	6163	205
2008 - 09	18	128	13.8	5819	194
2009 - 10	18	131	14.6	6316	211

CONTINUING EDUCATION

Distance Learning Offerings			
AY Total	Credit Courses	Students	Average Class Size
1999-00	19	313	16
2000-01	26	544	21
2001-02	31	694	22
2002-03	35	762	22
2003-04	45	1048	23
2004-05	64	1440	23
2005-06	75	1669	22
2006-07	97	2153	22
2007-08	103	2418	23
2008-09	121	2839	23
2009-10	134	3404	25

Extension Site Offerings - Fall Semester*			
Fall Term	Courses	Students	Average Class Size
Fall 1999 (5 sites)	18	377	21
Fall 2000 (5 sites)	11	174	16
Fall 2001 (8 sites)	19	262	14
Fall 2002 (9 sites)	17	222	13
Fall 2003 (17 sites)	61	830	14
Fall 2004 (22 sites)	92	1148	13
Fall 2005 (22 sites)	91	1294	14
Fall 2006 (20 sites)	99	1391	14
Fall 2007 (20 sites)	105	1694	16
Fall 2008 (20 sites)	104	1685	16
Fall 2009 (19 sites)	89	1437	16
Fall 2010 (20 sites)	110	2680	24

* In recent years, many of these sites have been University in the High School sites.

Hybrid Course Offerings			
AY Total	Credit Courses	Students	Average Class Size
2005-06	4	74	19
2006-07	8	141	18
2007-08	13	219	17
2008-09	15	310	21
2009-10	14	311	22